

NOTES:

1. SUBSTRATE:  
N-BK7

2. SURFACE S2 TO BE PARALLEL WITH SURFACE S1 TO WITHIN  $\leq 3$  ARCMIN

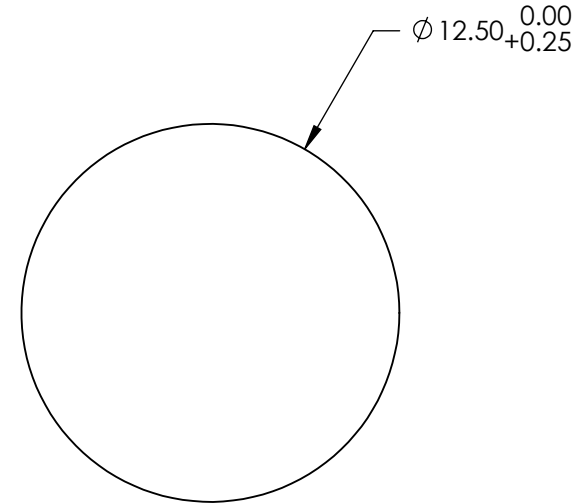
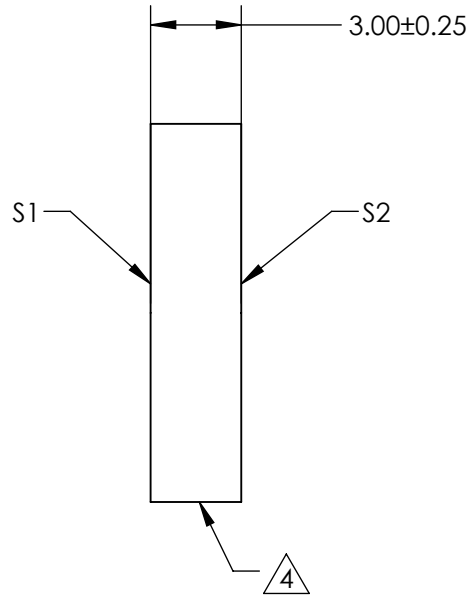
3. COATING (APPLY ACROSS CLEAR APERTURE)

S1: 80% R  $\pm 5\%$  @ 900nm  
20% T  $\pm 5\%$  @ 900nm

S2: AR R(avg)  $\leq 1\%$ , R(abs)  $\leq 2\%$  @ 700 - 1100nm

4. CUT WITH 0.25mm MAXIMUM EDGE CHIP

5. ROHS COMPLIANT



**FOR INFORMATION ONLY:  
DO NOT MANUFACTURE  
PARTS TO THIS DRAWING**

SPECIFICATIONS SUBJECT TO CHANGE WITHOUT NOTICE  
DIMENSIONS ARE FOR REFERENCE ONLY

|                    | S1          | S2          |
|--------------------|-------------|-------------|
| SHAPE              | PLANO       | PLANO       |
| ANGLE OF INCIDENCE | 45°         | 45°         |
| SURFACE QUALITY    | 60 - 40     | 60 - 40     |
| SURFACE FLATNESS   | 1λ PER 25mm | 1λ PER 25mm |

THIRD ANGLE PROJECTION

ALL DIMS IN mm

**EO**® Edmund Optics®

TITLE

12.5mm Dia 80R/20T, NIR Plate Beamsplitter

DWG NO

68418

SHEET  
13 OF 14