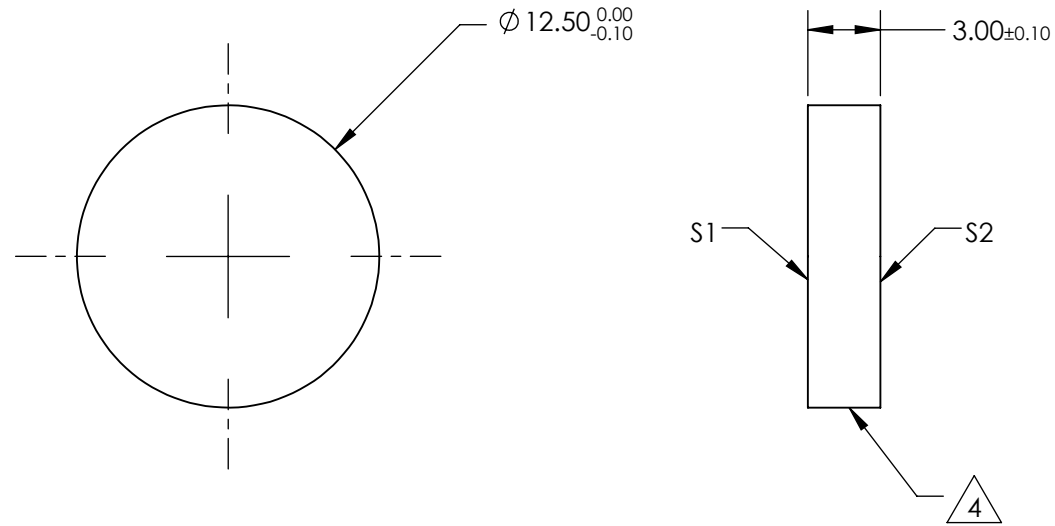
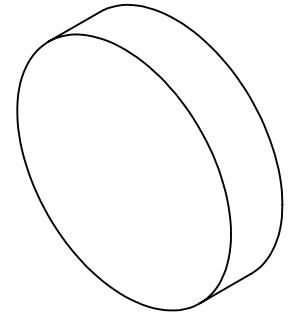


NOTES:

1. SUBSTRATE:
EXCIMER GRADE UV FUSED SILICA
2. SURFACE S2 TO BE PARALLEL WITH S1 TO 5 arcsec
3. COATING (APPLY ACROSS CLEAR APERTURE)
S1 & S2: R(ABS) < 0.25% @ 266nm, AOI: 0°

4. FINE GRIND SURFACE

5. RoHS COMPLIANT



**FOR INFORMATION ONLY:
DO NOT MANUFACTURE
PARTS TO THIS DRAWING**

SPECIFICATIONS SUBJECT TO CHANGE WITHOUT NOTICE
DIMENSIONS ARE FOR REFERENCE ONLY

	S1	S2
SHAPE	PLANO	PLANO
SURFACE QUALITY	10 - 5	10 - 5
DESIGN WAVELENGTH	266nm	266nm
BEVEL	PROTECTIVE AS NEEDED	PROTECTIVE AS NEEDED

THIRD ANGLE PROJECTION

ALL DIMS IN mm

Edmund Optics®

TITLE

12.5mm DIA. 266nm LASER V-COAT, λ/20
FUUSED SILICA WINDOW

DWG NO

48204

SHEET
1 OF 1