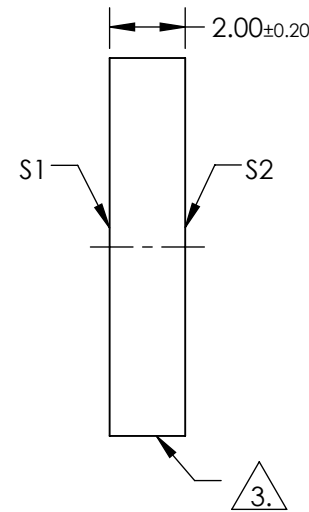
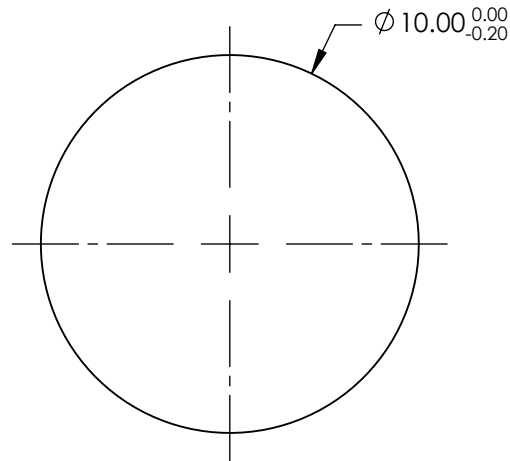


NOTES:

1. SUBSTRATE:  
FUSED SILICA
2. COATING (APPLY ACROSS COATING APERTURE):  
 S1: R(AVG) ≥ 98% @ 340-488nm @ 0° AOI  
 R(AVG) ≥ 98% @ 320-450nm @ 45° AOI FOR ALL POLARIZATION  
 R(AVG) ≥ 98% @ 320-450nm @ 45° FOR S-POLARIZATION  
 S2: NONE

3. FINE GRIND SURFACE

**FOR INFORMATION ONLY:  
DO NOT MANUFACTURE  
PARTS TO THIS DRAWING**



SPECIFICATIONS SUBJECT TO CHANGE WITHOUT NOTICE  
DIMENSIONS ARE FOR REFERENCE ONLY

|                  | S1                            | S2                   |
|------------------|-------------------------------|----------------------|
| SHAPE            | PLANO                         | PLANO                |
| CLEAR APERTURE   | > 90                          | N/A                  |
| SURFACE QUALITY  | 20-10                         | COMMERCIAL POLISH    |
| SURFACE FLATNESS | $\lambda/10$ (BEFORE COATING) | N/A                  |
| BEVEL            | PROTECTIVE AS NEEDED          | PROTECTIVE AS NEEDED |

THIRD ANGLE PROJECTION

ALL DIMS IN

mm

Edmund Optics®

TITLE

Ø10mm, 320 - 450nm BROADBAND  $\lambda/10$   
MIRROR

DWG NO

37559

SHEET  
1 OF 1