

NOTES:

1. SUBSTRATE: FUSED SILICA
2. SURFACE S2 TO BE PARALLEL TO SURFACE S1 TO WITHIN <5 ARCMIN
3. COATING (APPLY ACROSS COATING APERTURE)
 S1: R(AVG) > 99.7% 730 - 870nm @ 45° AOI
 Rs >99.7 @ 685 - 935nm @ 45° AOI

GDD:

S-POLARIZATION: $0 \pm 20\text{fs}^2$ @ 700 - 900nm
 P-POLARIZATION: $0 \pm 20\text{fs}^2$ @ 740 - 860nm

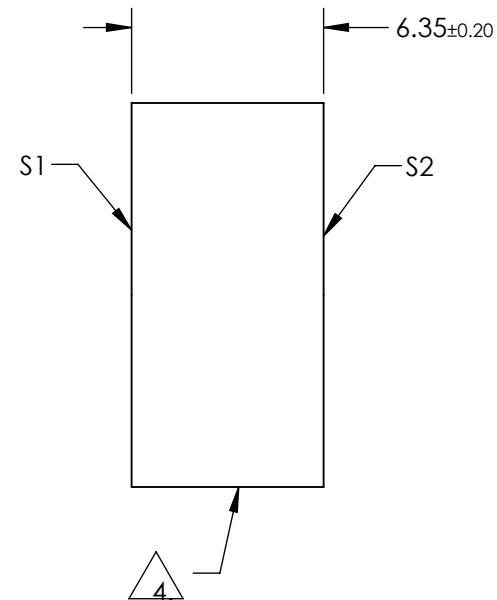
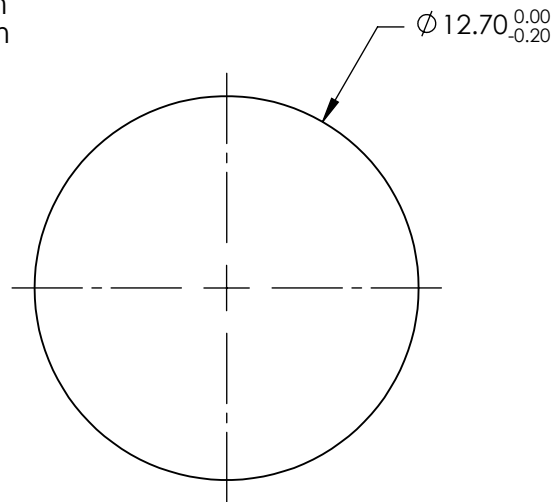
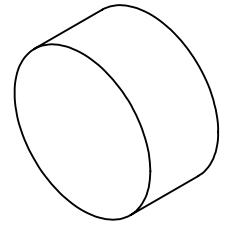
TOD:

S-POLARIZATION: 10fs^2 @ 800nm
 P-POLARIZATION: 40fs^2 @ 800nm

S2: NONE

4. FINE GRIND SURFACE

5. RoHS: COMPLIANT



**FOR INFORMATION ONLY:
 DO NOT MANUFACTURE
 PARTS TO THIS DRAWING**

SPECIFICATIONS SUBJECT TO CHANGE WITHOUT NOTICE
 DIMENSIONS ARE FOR REFERENCE ONLY

	S1	S2
SHAPE	PLANO	PLANO
SURFACE QUALITY	10-5	COMMERCIAL POLISH
SURFACE FLATNESS	$\lambda/10$	N/A
CLEAR APERTURE	$\text{Ø}10.80$	N/A
BEVEL	PROTECTIVE AS NEEDED	PROTECTIVE AS NEEDED



ALL DIMS IN mm



TITLE 700 - 900nm, 12.7mm DIA., ULTRAFAST BROADBAND LASER MIRROR

DWG NO 62765 SHEET 1 OF 1