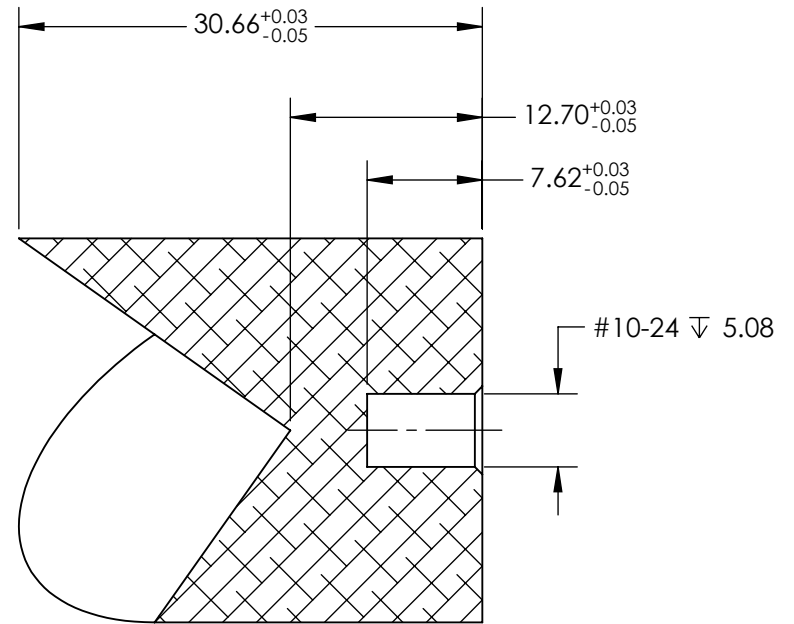
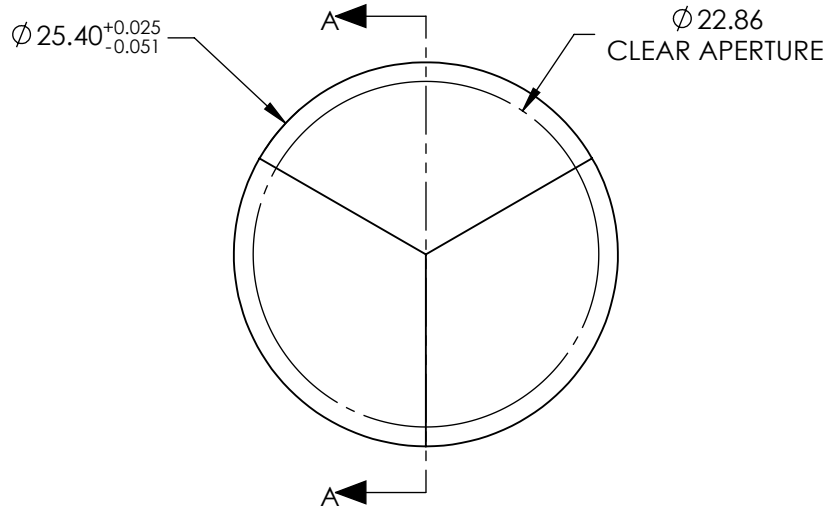


NOTES:

1. SUBSTRATE: ALUMINUM
2. BEAM DEVIATION: 5 ARCSEC
RAY DEVIATION: 180°
3. COATING SPECIFICATION (APPLY ACROSS CLEAR APERTURE):

R(AVG) >94% @ 700 - 800nm
 R(AVG) >97% @ 800 - 2000nm
 R(AVG) >98% @ 2 - 12μm

4. SURFACE QUALITY: 60-40
5. WAVELENGTH RANGE: 700 - 12000nm



SECTION A-A
 SPECIFICATIONS SUBJECT TO CHANGE WITHOUT NOTICE
 DIMENSIONS ARE FOR REFERENCE ONLY

**FOR INFORMATION ONLY:
 DO NOT MANUFACTURE
 PARTS TO THIS DRAWING**

EO® Edmund Optics®

THIRD ANGLE PROJECTION		TITLE	25.4mm DIA., 5 ARCSEC, BARE GOLD REPLICATED HOLLOW METAL RETROREFLECTOR	
ALL DIMS IN	mm	DWG NO	15901	SHEET 1 OF 1