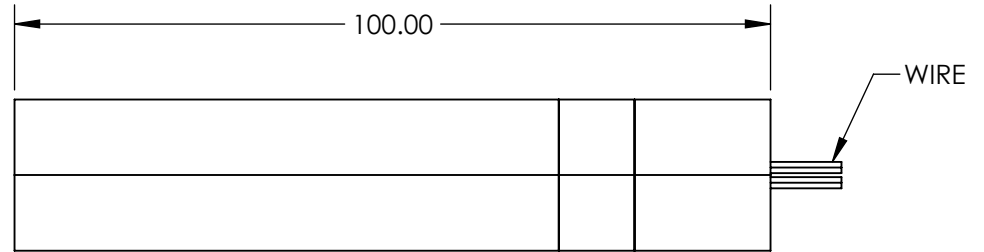
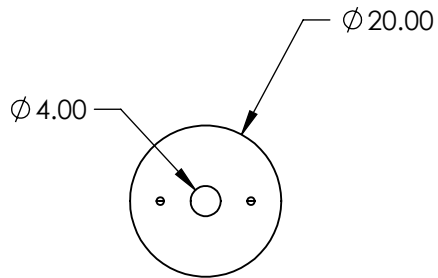
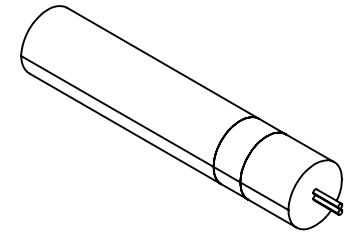


NOTES:

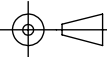
1. LASER CLASS: IIIb
2. BEAM DIAMETER (mm): 1.5 typical  
BEAM DIVERGENCE (mrad): <1.5 Typical
3. OPERATING TEMPERATURE: 15 to 35 °C  
OPERATING VOLTAGE: 3.00 V
4. OUTPUT POWER: 10 mW
5. WAVELENGTH RANGE: 473.00 ±1 nm



SPECIFICATIONS SUBJECT TO CHANGE WITHOUT NOTICE  
DIMENSIONS ARE FOR REFERENCE ONLY

**FOR INFORMATION ONLY:  
DO NOT MANUFACTURE  
PARTS TO THIS DRAWING**

**EO**® Edmund Optics®

THIRD ANGLE PROJECTION 		TITLE	10mW, 473nm DPSS Pointing Laser	
ALL DIMS IN	mm	DWG NO	19469	SHEET 1 OF 1