

NOTES:

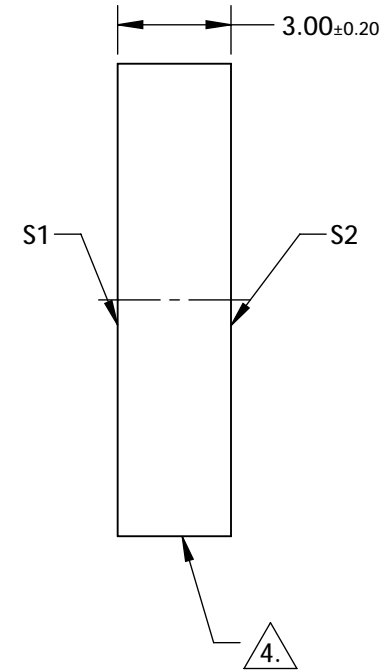
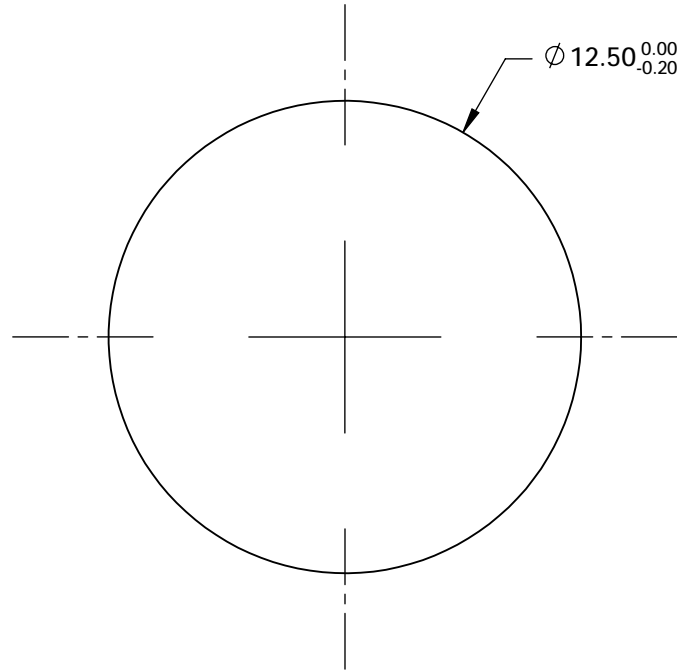
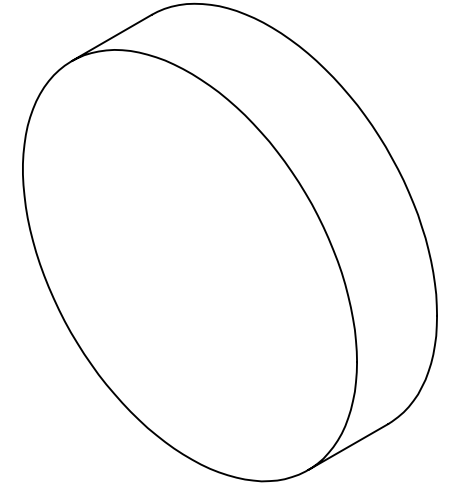
1. SUBSTRATE: Fused Silica
2. SURFACE S2 TO BE PARALLEL WITH SURFACE S1 TO WITHIN <3 ARCMIN
3. COATING (APPLY ACROSS CLEAR APERTURE)

S1: R(ABS) >99.5% @ 635, 670 & 1064nm @ 45° AOI
 DAMAGE THRESHOLD:
 20 J/cm² @ 20ns

S2: NONE

 4. COMMERCIAL POLISHED

5. POWER, IRREGULARITY, AND SURFACE QUALITY SPECIFICATION APPLY ACROSS CLEAR APERTURE



**FOR INFORMATION ONLY:
 DO NOT MANUFACTURE
 PARTS TO THIS DRAWING**

SPECIFICATIONS SUBJECT TO CHANGE WITHOUT NOTICE
 DIMENSIONS ARE FOR REFERENCE ONLY

	S1	S2
SHAPE	PLANO	PLANO
SURFACE QUALITY	10-5	NA
CLEAR APERTURE	Ø 11.25	NA
BEVEL	PROTECTED AS NEEDED	PROTECTED AS NEEDED

THIRD ANGLE PROJECTION 

ALL DIMS IN mm

 **Edmund Optics®**

TITLE

12.5mm Dia. x 3mm 635-670/1064nm, Dual Band Laser Mirror

DWG NO

20399

SHEET
1 OF 1