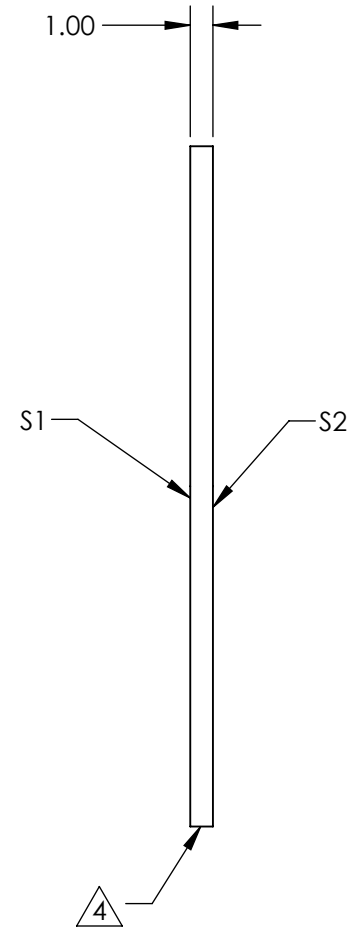
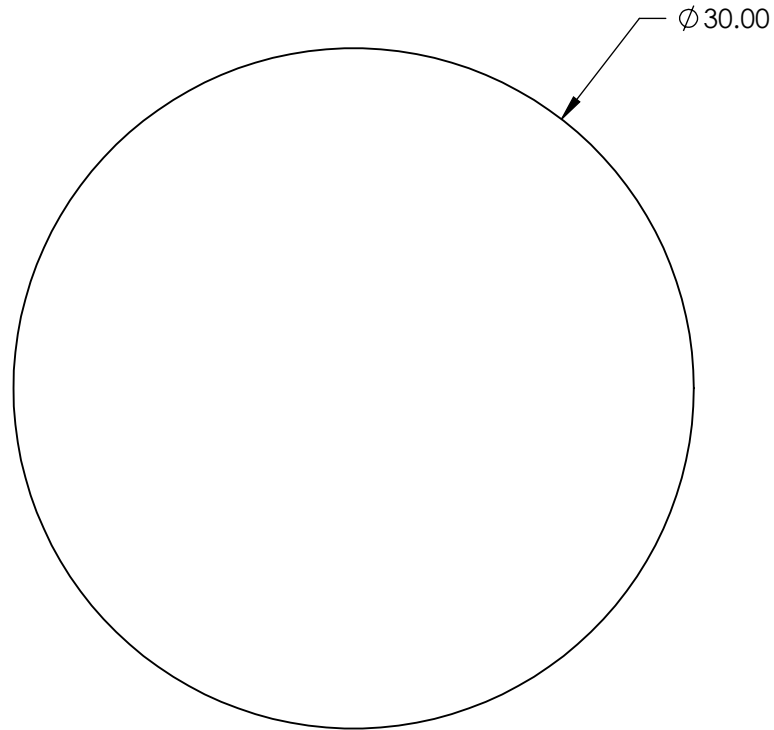


NOTES:

1. SUBSTRATE MATERIAL:
GERMANIUM
2. SURFACE S2 TO BE PARALLEL TO SURFACE S1 WITHIN 1 ARCMIN
3. COATING (APPLY ACROSS CLEAR APERTURE)
S1 & S2: Ravg < 3.0% @ 8 - 12µm

4. FINE GRIND SURFACE

5. PROTECTIVE BEVEL AS NEEDED



**FOR INFORMATION ONLY:
DO NOT MANUFACTURE
PARTS TO THIS DRAWING**

SPECIFICATIONS SUBJECT TO CHANGE WITHOUT NOTICE
DIMENSIONS ARE FOR REFERENCE ONLY

	S1	S2
SHAPE	PLANO	PLANO
SURFACE ACCURACY AT 10.6µm (P-V)	$\lambda/10$	$\lambda/10$
SURFACE QUALITY	60-40	60-40
CLEAR APERTURE	$\phi 27.00$	$\phi 27.00$

THIRD ANGLE PROJECTION

ALL DIMS IN mm

Edmund Optics®

TITLE

30mm Dia. x 1.0mm Thick 8-12µm AR
Coated, Ge Window

DWG NO

23155

SHEET
10 OF 12