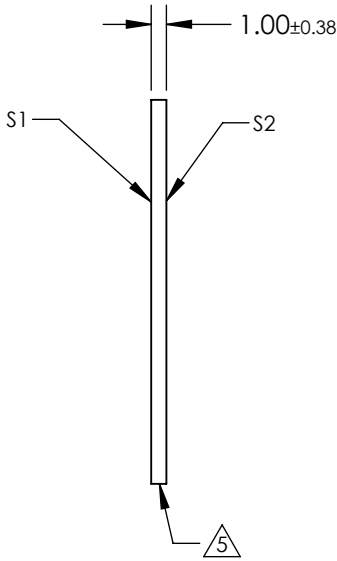
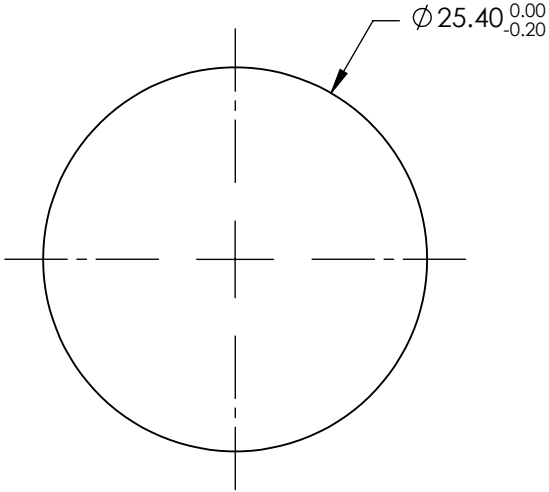


- NOTES:
- 1. SUBSTRATE: Fused Silica (Corning 7980)
 - 2. RoHS COMPLIANT
 - 3. SURFACE S2 TO BE PARALLEL WITH SURFACE S 1 TO WITHIN ACRMINS
 - 4. Coating (Apply Across Clear Aperture):
S1 & S2: Ravg ≤0.4% @ 425 - 675nm

5. FINE GROUND SURFACE



**FOR INFORMATION ONLY:
DO NOT MANUFACTURE
PARTS TO THIS DRAWING**

SPECIFICATIONS SUBJECT TO CHANGE WITHOUT NOTICE
DIMENSIONS ARE FOR REFERENCE ONLY

| | S1 | S2 |
|------------------|---------------------|---------------------|
| Shape | Plano | Plano |
| Surface Accuracy | 1λ | 1λ |
| Surface Quality | 60-40 | 60-40 |
| Clear Aperture | 22.86 | 22.86 |
| Bevel | Protected as Needed | Protected as Needed |

THIRD ANGLE
PROJECTION

ALL DIMS IN mm

| | | | |
|---|--|--------------------|--|
|  Edmund Optics® | | | |
| TITLE | 25.4mm Dia. 1mm Thick VIS 0° Coated, 1λ Fused Silica Window | | |
| DWG NO | 25275 | SHEET 32 OF 101 | |