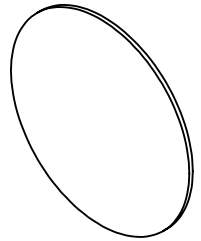


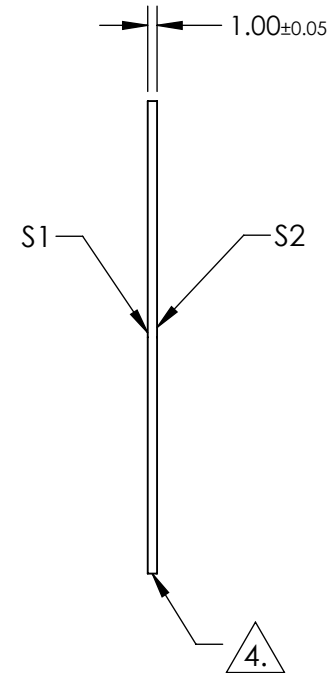
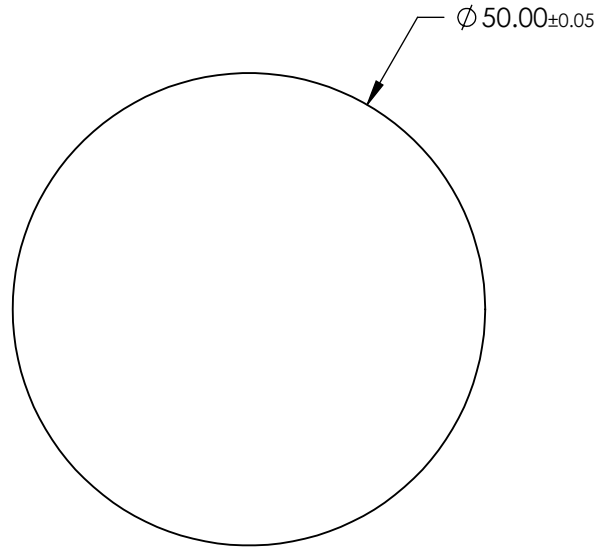
NOTES:

1. SUBSTRATE:  
SAPPHIRE (AL2O3)
2. SURFACE S2 TO BE PARALLEL WITH SUFACE S1 TO WITHIN  $\leq 3.5$  ARMIN
3. COATING (APPLY ACROSS CLEAR APERTURE)  
S1 & S2: R(AVG)  $\leq 1.75\%$  @ 400 - 700nm



4. FINE GRIND SURFACE

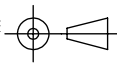
5. ROHS COMPLIANT



**FOR INFORMATION ONLY:  
DO NOT MANUFACTURE  
PARTS TO THIS DRAWING**

SPECIFICATIONS SUBJECT TO CHANGE WITHOUT NOTICE  
DIMENSIONS ARE FOR REFERENCE ONLY

	S1	S2
SHAPE	PLANO	PLANO
CLEAR APERTURE	$\phi 45.00$	$\phi 45.00$
SURFACE FLATNESS	$2\lambda$	$2\lambda$
SURFACE QUALITY	80-50	80-50
BIREFRINGENCE (no-ne)	0.008	0.008
BEVEL	PROTECTED AS NEEDED	PROTECTED AS NEEDED

THIRD ANGLE PROJECTION 

ALL DIMS IN mm

 **Edmund Optics®**

TITLE: 50mm Dia., 1mm Thick, MgF2 AR Coated Sapphire Window

DWG NO: 25394

SHEET 19 OF 70