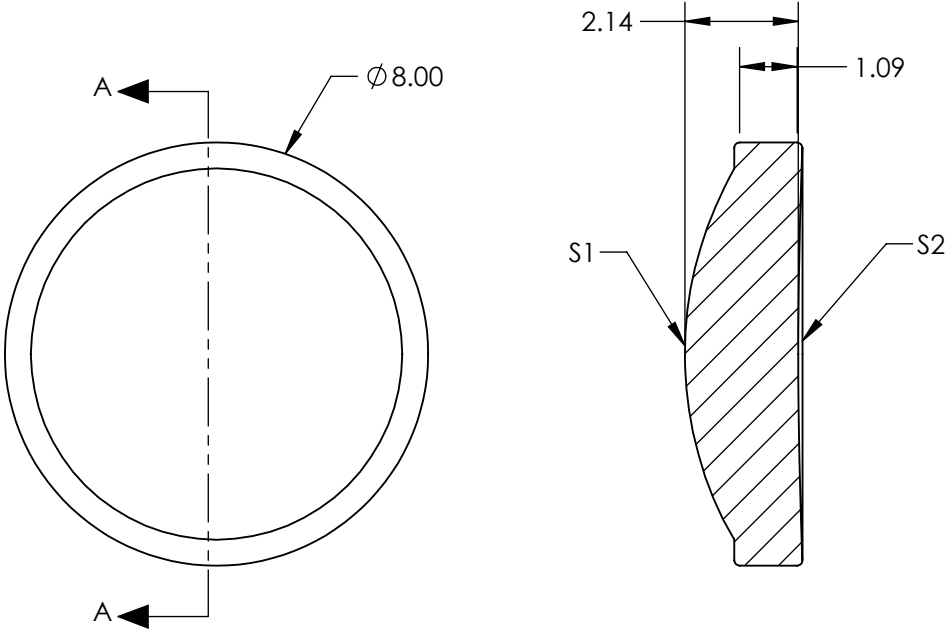



NOTES:

1. SUBSTRATE:
M-LAF81
2. NUMERICAL APERTURE: 0.33
3. COATING: BBAR (755 - 805nm)
S1 & S2: R(AVG) <1.5% @ 755 - 805nm (Theoretical per Surface)
4. WORKING DISTANCE (mm): 8.75 (not including cover glass)
5. COVER GLASS THICKNESS (mm): 0.25
6. TRANSMITTED WAVEFRONT ERROR, RMS @ 632.8nm: 0.04λ
7. TRANSMITTED WAVEFRONT ERROR, RMS: 0.04λ @ 780nm
8. CLEAR APERTURE (mm): 5.35



**FOR INFORMATION ONLY:
DO NOT MANUFACTURE
PARTS TO THIS DRAWING**

SPECIFICATIONS SUBJECT TO CHANGE WITHOUT NOTICE
DIMENSIONS ARE FOR REFERENCE ONLY

	S1	S2	THIRD ANGLE PROJECTION		EFL 10.00  Edmund Optics®		
SHAPE	CONVEX	PLANO			TITLE	0.33 NA, 10.0mm FL, HOYA Molded Glass Aspheric Lens	
BEVEL	PROTECTED AS NEEDED	PROTECTED AS NEEDED	ALL DIMS IN	mm	DWG NO	13585	SHEET 1 OF 1