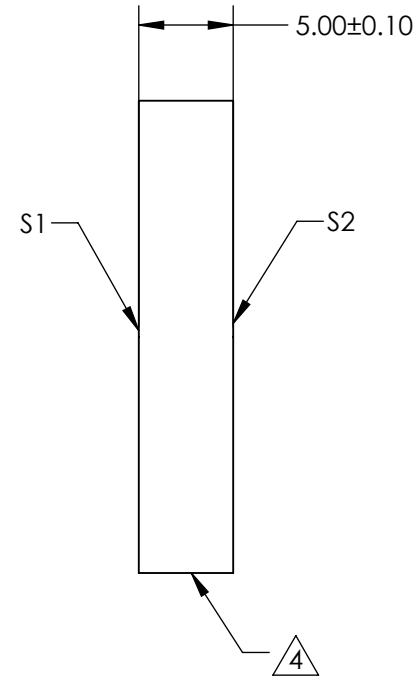
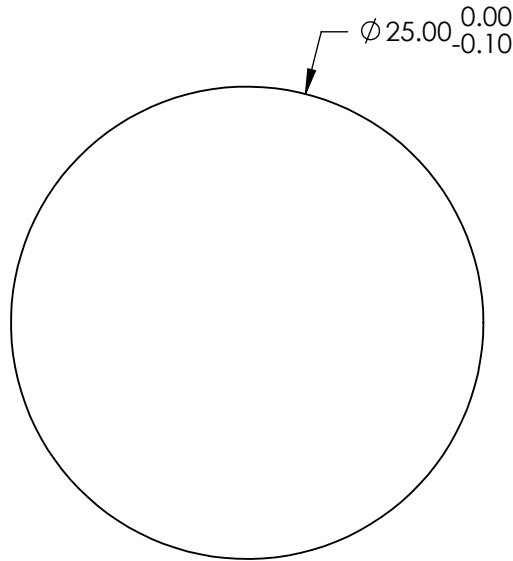


- NOTES:
- 1. SUBSTRATE:
FUSED SILICA (CORNING 7980)
 - 2. S1 TO BE PARALLEL WITH S2 TO WITHIN <1 ARCMIN
 - 3. COATING (APPLY ACROSS CLEAR APERTURE)
S1 & S2: VIS 0° (425-675nm)
R(AVG) ≤0.4% @ 425 - 675nm

4. FINE GRIND SURFACE

5. ROHS COMPLIANT



**FOR INFORMATION ONLY:
DO NOT MANUFACTURE
PARTS TO THIS DRAWING**

SPECIFICATIONS SUBJECT TO CHANGE WITHOUT NOTICE
DIMENSIONS ARE FOR REFERENCE ONLY

	S1	S2
SHAPE	PLANO	PLANO
SURFACE QUALITY	40 - 20	40 - 20
CLEAR APERTURE	Ø 22.50	Ø 22.50
BEVEL	PROTECTED AS NEEDED	PROTECTED AS NEEDED

THIRD ANGLE
PROJECTION

ALL DIMS IN mm

 **Edmund Optics®**

TITLE	25mm Dia., 5mm Thick, VIS 0° Coated, λ/4 Fused Silica Window	
DWG NO	72367	SHEET 33 OF 84