

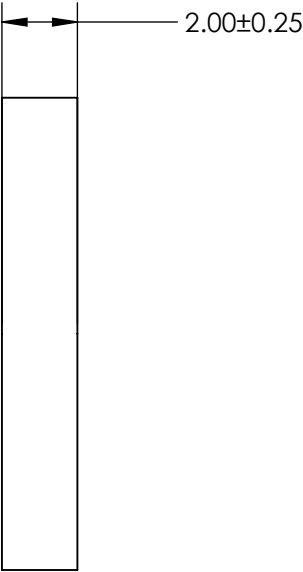
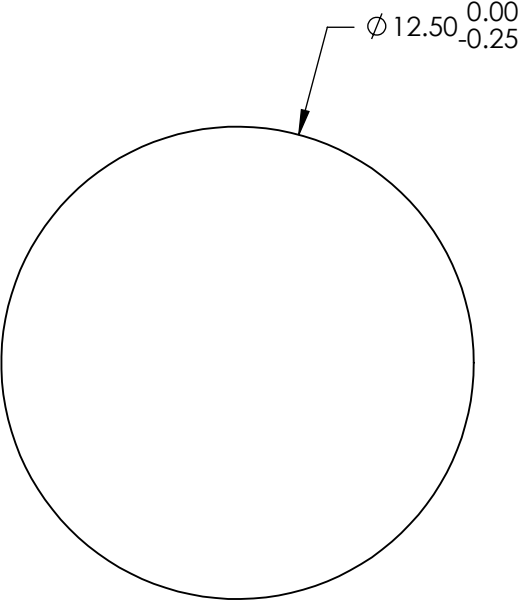
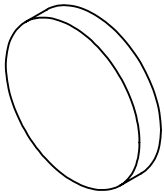
NOTES:
1. SUBSTRATE:
BOROFLOAT®

2. COATING (APPLY ACROSS CLEAR APERTURE)
S1: DIELECTRIC MIRROR (400 - 750nm)
R(avg) >99% @ 400 - 750nm @ 0 - 45° AOI
R(avg) >99% @ 400 - 750nm @ 0° AOI

S2: NONE

3. FINE GRIND SURFACE

4. ROHS COMPLIANT




**FOR INFORMATION ONLY:
DO NOT MANUFACTURE
PARTS TO THIS DRAWING**

SPECIFICATIONS SUBJECT TO CHANGE WITHOUT NOTICE
DIMENSIONS ARE FOR REFERENCE ONLY

	S1	S2
SHAPE	PLANO	PLANO
CLEAR APERTURE (%)	90	N/A
SURFACE QUALITY	60 - 40	COMMERCIAL POLISH
SURFACE FLATNESS	$\lambda/4$	N/A
BEVEL	PROTECTED AS NEEDED	PROTECTED AS NEEDED

THIRD ANGLE
PROJECTION

ALL DIMS IN mm

 **Edmund Optics®**

TITLE	12.5mm Dia. 400 - 750nm Broadband $\lambda/4$ Mirror	
DWG NO	70667	SHEET 1 OF 5