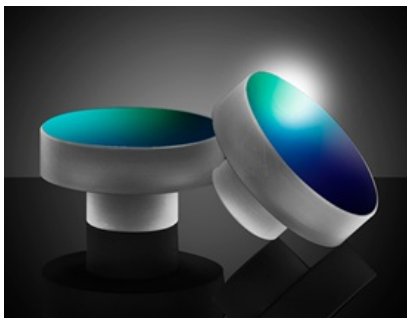


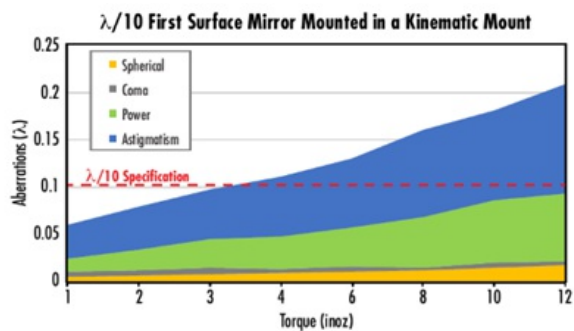
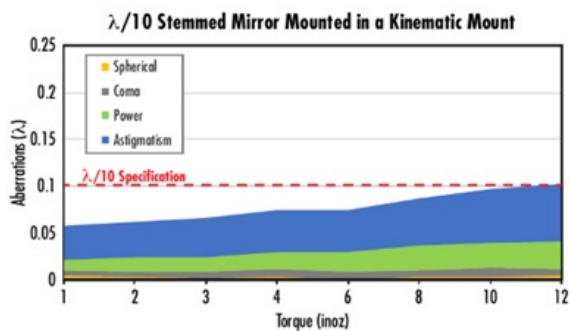
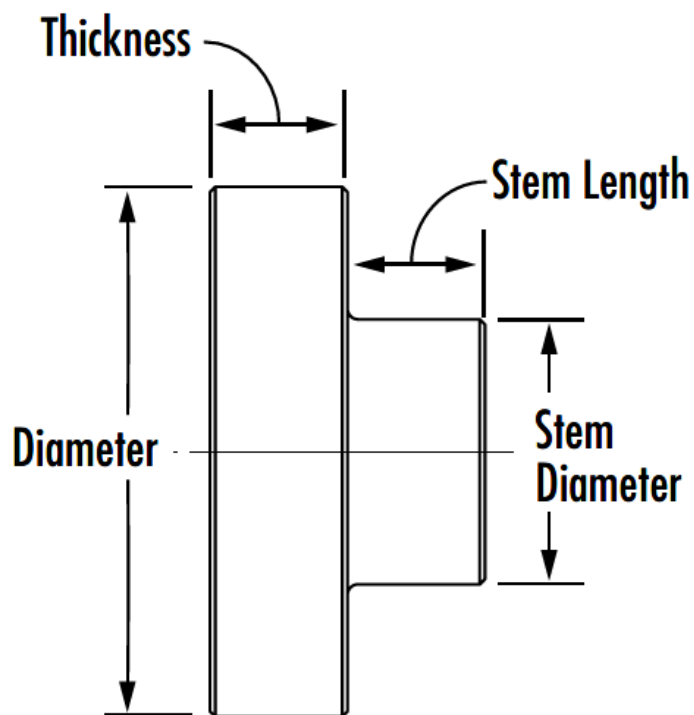
[All Products](#) / [Optics](#) / [Optical Mirrors](#) / [Flat Mirrors](#) / [Precision Polished Dielectric Coatings](#)

TECHSPEC® Broadband Dielectric Stemmed Mirrors

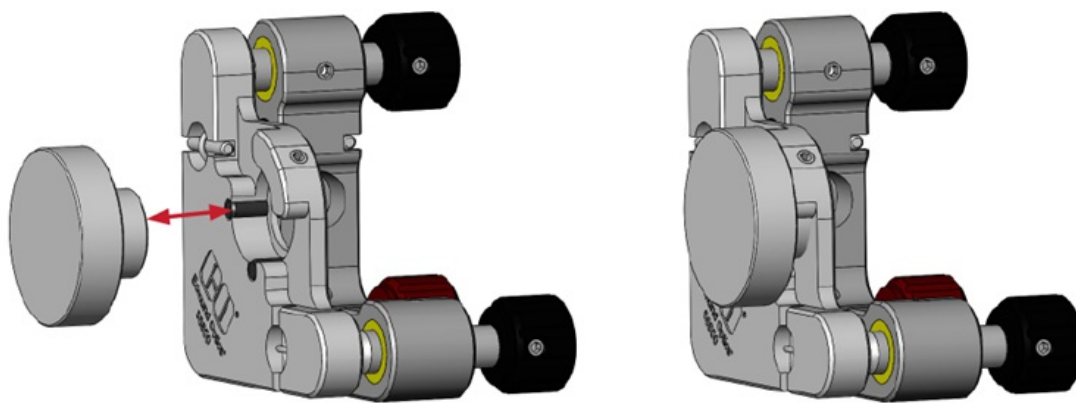


- Stemmed Design Reduces Stress on Mirror Surface when Mounted by Stem
- >99% Average Reflectivity Over Broad Wavelength Ranges
- 20-10 Surface Quality and 0 - 45° Angle of Incidence
- TECHSPEC® [Laser](#) and [Metallic Coated](#) Stemmed Mirrors Also Available

Technical Information




A comparison of the aberrations introduced to a $\lambda/10$ Stemmed Mirror and a $\lambda/10$ First Surface Mirror when mounted in a kinematic mount. As shown, a Stemmed Mirror stays within $\lambda/10$ specification up to 12 in-oz of torque ("hand-tight") while a First Surface Mirror becomes out of specification with a surface flatness of $\lambda/5$.



Stemmed Mirrors are mounted to kinematic mounts by a stem on their back surface, resulting in no contact with the edges of the mirror surface.

Products

Dia. (mm)	Surface Flatness (P-V)	Coating Specification	Coating	Thickness (mm)	Stock Number	Price	Buy
					#14-577 Clearance		
							
					Clearance		
					Availability is limited, so buy before these products disappear. Sorry, we cannot accept returns. Receive up to 80% off select products.		
25.00	λ/10	-	Uncoated	13.00		S\$121.10	15 In Stock



Copyright 2024, Edmund Optics Singapore Pte. Ltd, 18 Woodlands Loop #04-00, Singapore 738100
[PRIVACY POLICY](#) [COOKIE POLICY](#) [TERMS & CONDITIONS](#)

Phone: 1-800-363-1992 :
www.edmundoptics.com